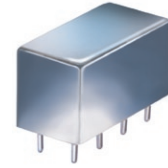


X2 Frequency Multiplier

50Ω Output 10 to 1000 MHz

RK-2+



CASE STYLE: A01
PRICE: \$22.20 ea. QTY (1-9)

Maximum Ratings

Operating Temperature	-55°C to 100°C
Storage Temperature	-55°C to 100°C
RF Input Power	200mW

Permanent damage may occur if any of these limits are exceeded.

Pin Connections

INPUT	1,3,4 [^]
OUTPUT	8
GROUND	2,5,6,7
CASE GROUND	2,5,6,7

[^] pins must be connected together externally

Features

- wideband, 10 to 1000 MHz
- low conversion loss, 13.5 dB typ.
- hermetic case

Applications

- synthesizers
- local oscillators
- military, hi-rel applications

+ RoHS compliant in accordance with EU Directive (2002/95/EC)

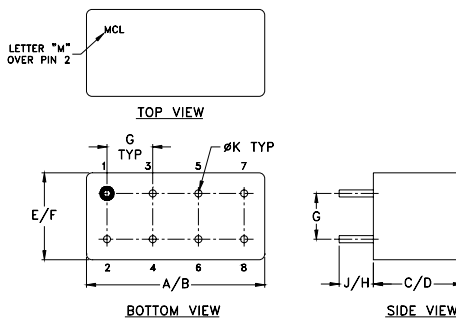
The +Suffix has been added in order to identify RoHS Compliance. See our web site for RoHS Compliance methodologies and qualifications.

Electrical Specifications

MULTIPLICATION FACTOR	FREQUENCY (MHz)		INPUT POWER (dBm)		CONVERSION LOSS (dB)		*HARMONIC OUTPUT (dBc)					
	F1	F2					F1		F3		F4	
	Input	Output	Min.	Max.	Typ.	Max.	Typ.	Min.	Typ.	Min.	Typ.	Min.
2	5-100	10-200	1	15	13	16	40	30	50	40	16	12
	100-300	200-600	1	15	13.5	15.5	25	20	40	30	16	12
	300-500	600-1000	1	15	14.0	16.5	20	15	30	25	16	12

* Harmonics of input frequency below the power level of F2

Outline Drawing

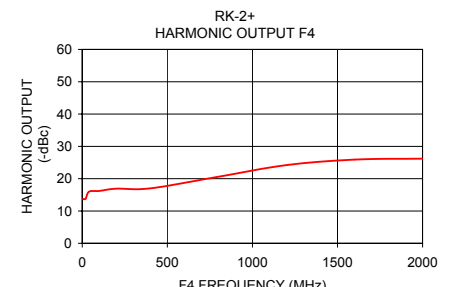
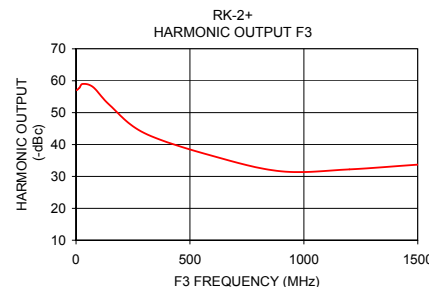
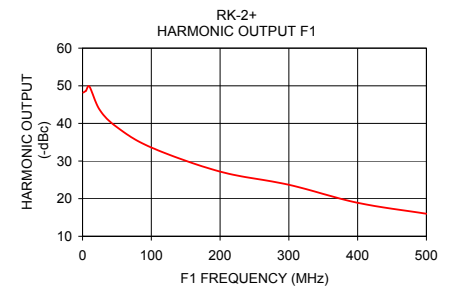
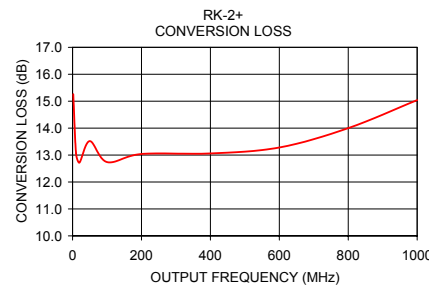


Typical Performance Data

Input Frequency (MHz)	Conversion Loss (dB) F2	F1	Harmonic Output (-dBc) F3	F4
1.00	15.26	48.20	57.00	13.70
5.00	13.06	48.70	57.80	13.80
10.00	12.72	49.80	59.00	16.00
25.00	13.52	43.60	58.00	16.20
50.00	12.74	39.00	52.20	16.90
100.00	13.04	33.60	43.60	17.00
200.00	13.06	27.20	36.40	20.60
300.00	13.28	23.70	31.60	24.20
400.00	14.00	18.90	32.20	25.90
500.00	15.04	16.00	33.70	26.20

Outline Dimensions (Inch/mm)

A	B	C	D	E	F
.770	.800	.385	.400	.370	.400
19.56	20.32	9.78	10.16	9.40	10.16
G	H	J	K	wt	
.200	.20	.14	.031	grams	
5.08	5.08	3.56	0.79	5.2	



Mini-Circuits
ISO 9001 ISO 14001 AS 9100 CERTIFIED

P.O. Box 350166, Brooklyn, New York 11235-0003 (718) 934-4500 Fax (718) 332-4661 The Design Engineers Search Engine www.minicircuits.com Provides ACTUAL Data Instantly at minicircuits.com

Notes: 1. Performance and quality attributes and conditions not expressly stated in this specification sheet are intended to be excluded and do not form a part of this specification sheet. 2. Electrical specifications and performance data contained herein are based on Mini-Circuit's applicable established test performance criteria and measurement instructions. 3. The parts covered by this specification sheet are subject to Mini-Circuits standard limited warranty and terms and conditions (collectively, "Standard Terms"); Purchasers of this part are entitled to the rights and benefits contained therein. For a full statement of the Standard Terms and the exclusive rights and remedies thereunder, please visit Mini-Circuits' website at www.minicircuits.com/MCLStore/terms.jsp.

REV. C
M126372
RK-2+
AD/CP/AM
100215